

# PANJO

---

AUGUSTA BONNARD  
PAEDIATRIC NURSE

# Who are we ? 😊



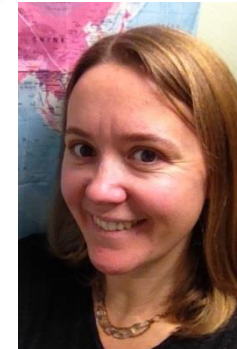
Thomas Saïas  
Responsable  
scientifique  
Coordination du projet  
Responsable des  
recherches



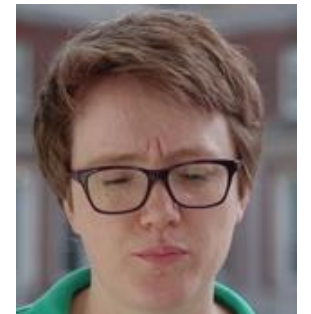
Julie Bodard  
Cheffe de Projet  
Panjo-II



Romain Dugravier  
Responsable clinique Panjo-II  
Chef de service Hop. Ste Anne



Augusta Bonnard  
Présidente ANISS  
Formatrice Panjo



Sandie Sempé  
Chargée d'expertise  
scientifique

# What PANJO is?

---

« Promotion de la santé et de l'Attachement des Nouveau-nés et de leurs Jeunes parents : un Outil de renforcement des services de PMI »

1. Panjo is a home visiting program drive by pediatric nurse, for first-time parents with isolation feeling
2. Panjo includes a dedicated training, oversight sessions for the home-visitor and a guide for the intervention.

# PANJO origins?

---

1. International research : NFP from USA an UK
2. SIPPE from Quebec
3. CAPEDP from France

# PMI

---

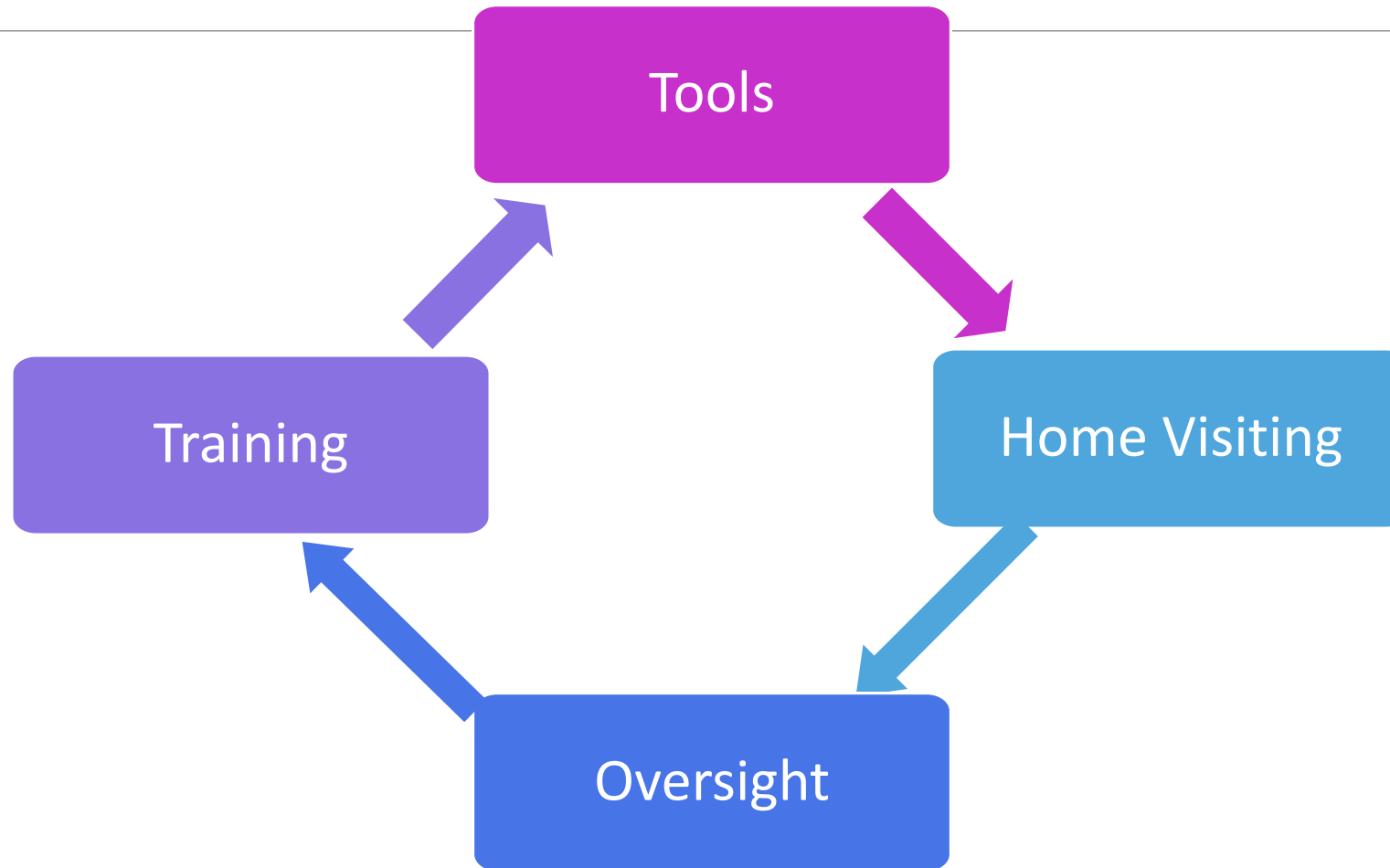
« Protection Maternelle et Infantile »

“Mother an Infant Welfare Protection Service”

1. Institution for prevention and promotion of health
2. Public service everywhere in France, for all families and children up to 6 years old
3. Professional of childhood and family are working together in multi professional teams : Social worker, pediatric nurse, doctor, psychologist, midwife, Child care assistant...
4. Centers of attention : medical and nurse attention, vaccination, early childhood and parenthood preventive action
5. Home-visiting with criteria of vulnerability

# PANJO : 4 axis

---



# Panjo Home-visiting

---

## 2 prenatal visits

- To built a relationship
- To answer first-parents questions

## Post natal visits

- 4 up to 6 month
- + 6 up to 12 month
- According family's needs and asks
- 20 minutes focused on attachment

+ Orientation in other services of PMI and partners (social services, hospital..)

# Tools/ Implement

---

## The Folder

- Attachment booklet
- Cards for co-construction
- Parents and child health card
- Social and familial cards
- Attachment activity cards



# Trainings

---

## 2 trainings

- **Attachment session** for all PMI professionals: 3 days
- It allows a common vocabulary
- Could be the base for a project for the PMI service
  
- **Home visiting session** for the pediatric nurse: 2 days

# Oversight

---

By partners from child psychiatry sector

Objectives:

- Support the relationship ped. nurse/family
- Keep the framework/context of the intervention
- To rely on attachment theory
- To work on his own feelings

# PANJO Step I (2011-2015)

---

3/101 pilots departments

Strong support from 112 professionals trained in the project.

Commitments toward ensuring the sustainability of Panjo within the services.

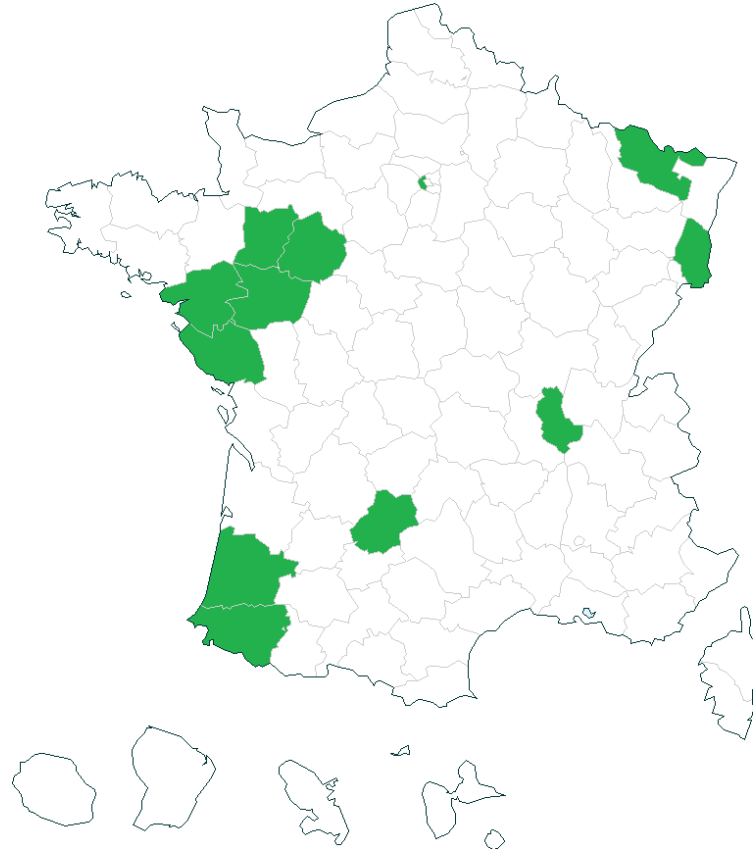
And the challenge is to assess the impact of Panjo on the families

# PANJO Step II (2016-2018)

---

11/101 departments  
240 professionals  
129 Home visitors

335 families expected  
500 families control group



# Bibliography

---

- Dugravier et Saïas. « Les enseignements du projet Panjo ». Cahiers de la puéricultrice. Novembre 2015 - n°291
- Saïas et al. « Favoriser l'attachement parents-enfants ». Cahiers de la puéricultrice. Janvier 2015 n° 283
- Thomas Saïas et al. De l'expérimentation scientifique à l'implantation dans les dispositifs de droit commun : le projet Panjo. Revue francophone internationale de recherche infirmière. A paraître
- Yves Géry, Articles Panjo dans la Santé en Action, revue trimestrielle de Santé publique France octobre 2016
- Saïas et al., « De l'expérimentation scientifique à l'implantation dans les dispositifs de droit commun: le projet PANJO ». Revue francophone internationale de recherche infirmière, 2016
- Le Nestour, A. « Le dispositif PANJO: intensification du travail en réseau. Enfances et psy, n°69, 2016
- Dugravier R. CAPEDP : une étude longitudinale périnatale évaluant une intervention à domicile de prévention de la dépression postnatale et des troubles de la relation mère-enfant auprès d'une population de femmes présentant des critères de risque psychosociaux (Thèse de doctorat) Paris, Université Pierre et Marie Curie, 2014.
- Olds DL. The Nurse-Family Partnership: an evidence-based preventive intervention. Infant Ment Health J.2006;27:5-25
- Dugravier R, Tubach F, Saïas T et al. Impact of a manualized multifocal perinatal home-visiting program using psychologists on postnatal depression: The CAPEDP Randomized controlled trial. PloS ONE. 2013;8:e722 16.
- Guedeney A, Wendland J, Dugravier R et al. Impact Of randomized home-visiting trial on infant social withdrawal in the CAPEDP prevention study. Infant Ment Health J. 2013;34:594-601;
- Olds D, Kitzman H, Cole R, Robinson J, Sidora K, Luckey DW et al. Effects of nurse home-visiting on maternal life course end child development: age 6 follow-up results of a randomized trial. Pediatrics 2004; 114(6): 1550-9.
- Bowlby J. Attachment, Vol 1 of attachment and loss: attachment. New York: Basic Book.

PANJO



The word "PANJO" is written in a bold, magenta, sans-serif font. A horizontal blue line is positioned below the letters "P", "A", "N", and "J". To the right of the word are three blue nesting dolls of different sizes, arranged in a cluster. The largest doll is on the left, a medium one is on the top right, and the smallest one is on the bottom right.