

**WELCOME**

# 27th PNAE Meeting

**Paediatric Nursing Associations of Europe**

Escola Superior de Enfermagem do Porto, Porto, Portugal  
**Nursing School of Porto**

25th May 2016

**Sandra Cruz**  
[sandracruz@esenf.pt](mailto:sandracruz@esenf.pt)



# REGISTERED NURSES IN PORTUGAL

## Registered Nurses –

**67 893**

- Female – 55 629

- Male – 12 264

## Registered Paediatrics Nurses

**– 2200**

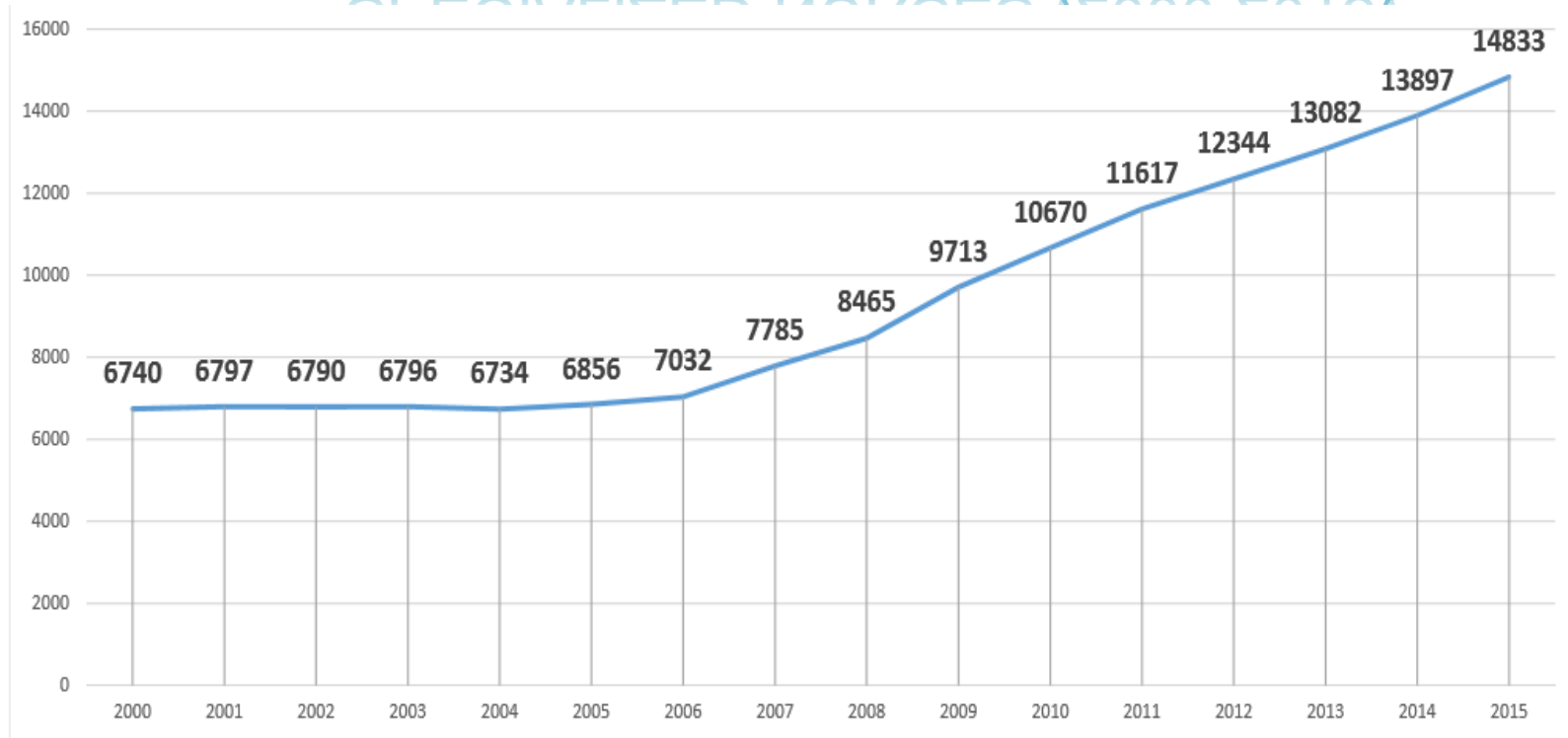
- Female – 2060

- Male – 140

OE, 31/12/2015



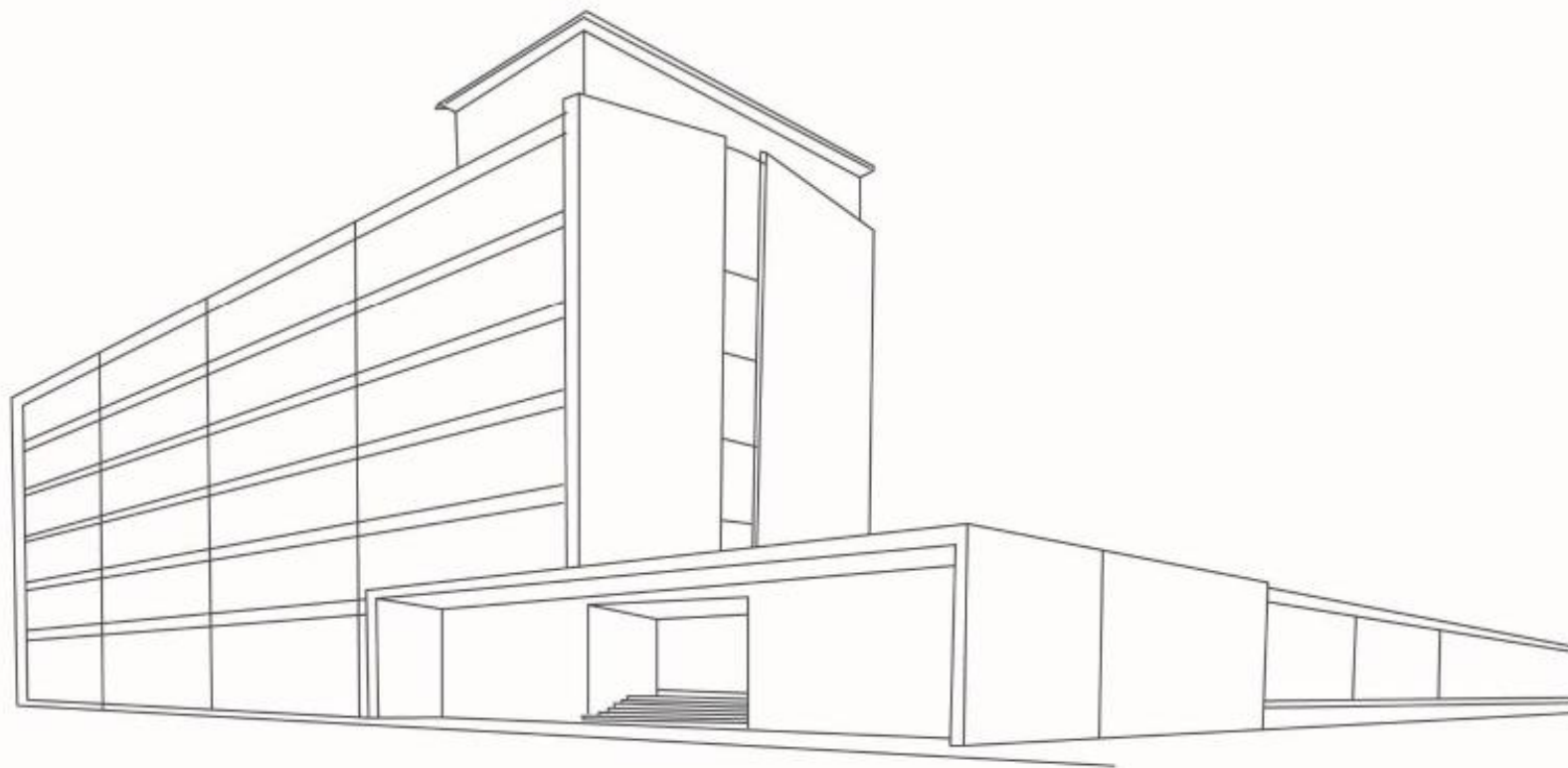
# SPECIALIZED NURSES (2000-2015)



## SPECIALIZED NURSES (2015)

	F	M	Total
Rehabilitation	2 234	933	3 167
→ Child Health and Paediatrics	2 060	140	2 200
Midwives	2 465	133	2 598
Medical & Surgical	2 113	702	2 815
Community	2 033	341	2 374
Mental Health & Psychiatry	1 174	505	1 679
	<b>12 079</b>	<b>2 754</b>	<b>14 833</b>

OE, 31/12/2015



## ESCOLA SUPERIOR DE ENFERMAGEM DO PORTO



## HISTORY

Institution dedicated to the nursing education (undergraduated & post graduated levels)

Born in the 1st January 2007 after the fusion of the 3 colleges. We took the best that each of the colleges had to offer. Therefore, the development of a new College open to the community and which becomes a national & international reference in teaching and research in nursing is now a reality.



# ESCOLA SUPERIOR DE ENFERMAGEM DO PORTO

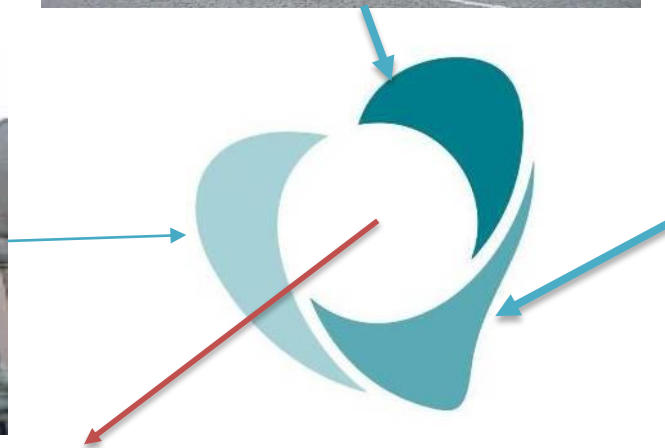


(ESEnfDAG), 1896

(ESEnfCP), 1983



(ESEnfSJ), 1948



The circle symbolizes, the human eye, the vision and the search for a promising future and, on the other hand, represents the perfection that is pursued as a design.

The heart is inspired in the white heart - international symbol of Nursing, assumed and recommended by the ICN.

The heart is also linked to the history of our city, where D. Pedro IV gave his heart to the city. He was a symbol of freedom, patriotism and strength. In 1835, his heart was deposited in the Lapa Church as it was his desire.



## MISSION

### Porto Nursing School

is a place where students learn a nursing that is more relevant for people and learn how to be interventive in the process of caring in health.





## **MOBILITY** (Countries – Agreements)

- Germany – 1
- Belgium – 4
- Cyprus – 1
- Denmark – 2
- Spain-12
- Estonia-1
- Norway
- Finland – 3
- Netherlands – 1
- Lithuania – 1
- Romania – 1
- Sweden – 1
- Switzerland – 1
- France – 6
- Poland – 1
- Turkey - 1







## Staff

- 51 staff
- 86 professors
- 1555 students

## Students activities

- 1 students association
- 3 tunas; musical group
- 1 Fado group

## Tools

- More than 100 free access computers
- More than 13 thousand scientific books
- More than 16 thousand scientific journals

## PLACES

- 3 buildings
- 2 auditoriums
- 34 classrooms
- 16 laboratories
- 7 ICT classrooms
- 2 libraries

## R&D

**UNIESEP** –  
Research unit;

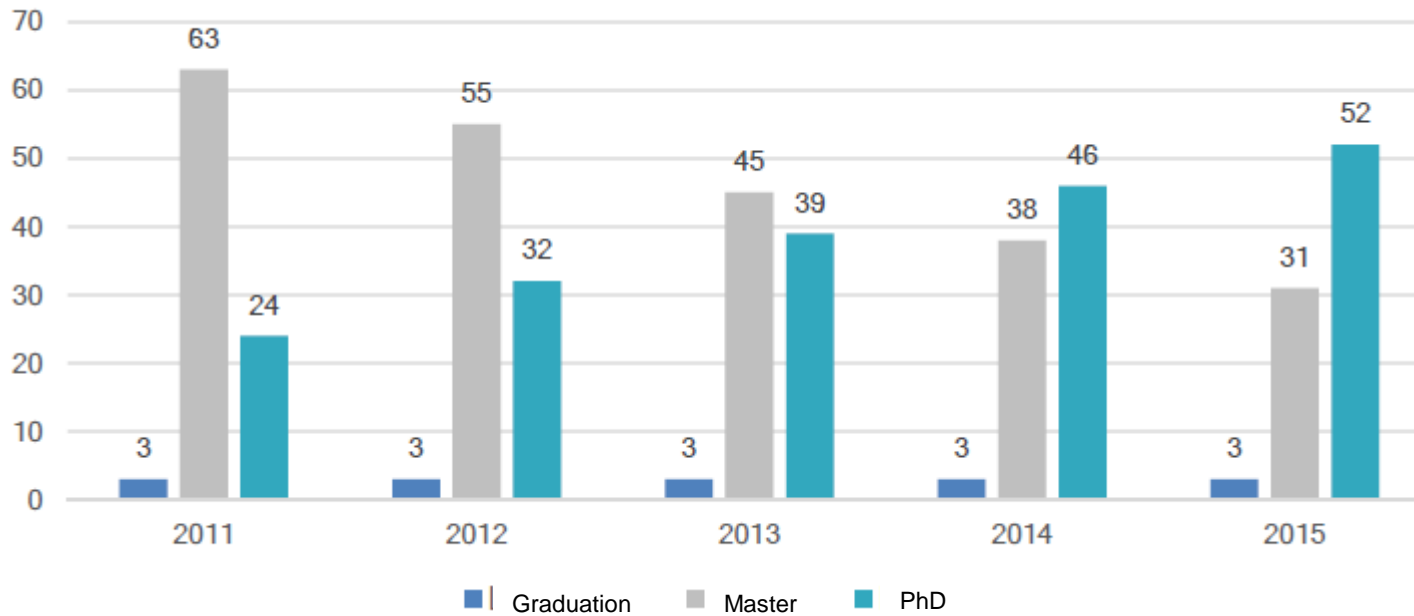
**CIDESI** – **ICN**  
accredited  
Centre

78 research  
projects



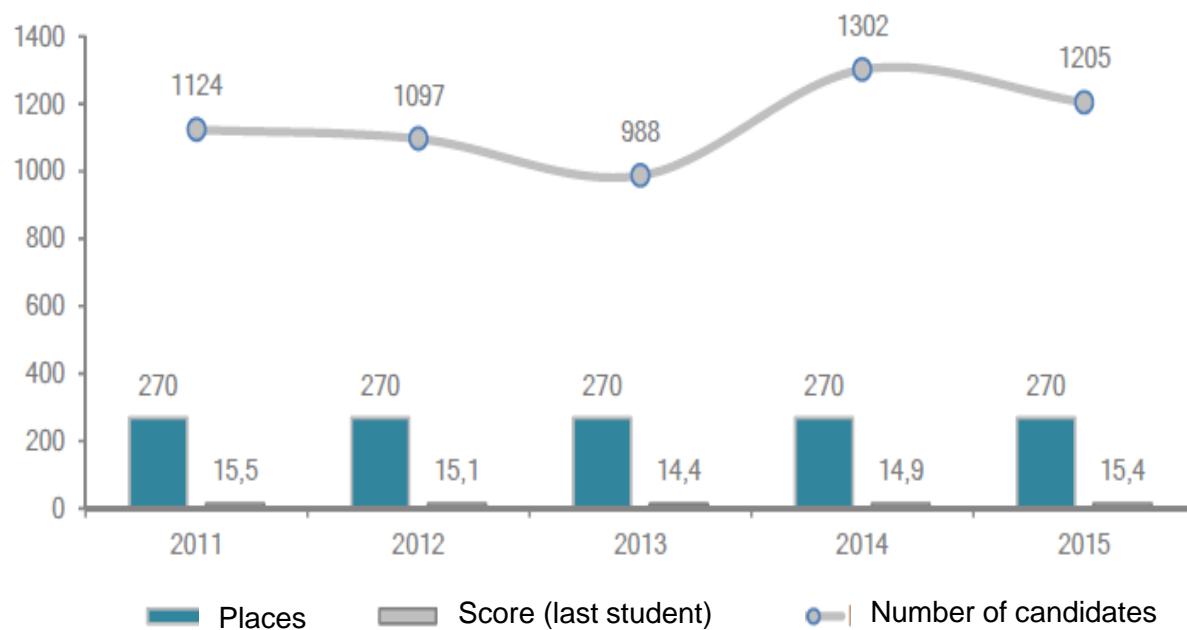


## Evolution of the academic degrees of the full time professors (2011- 2015)



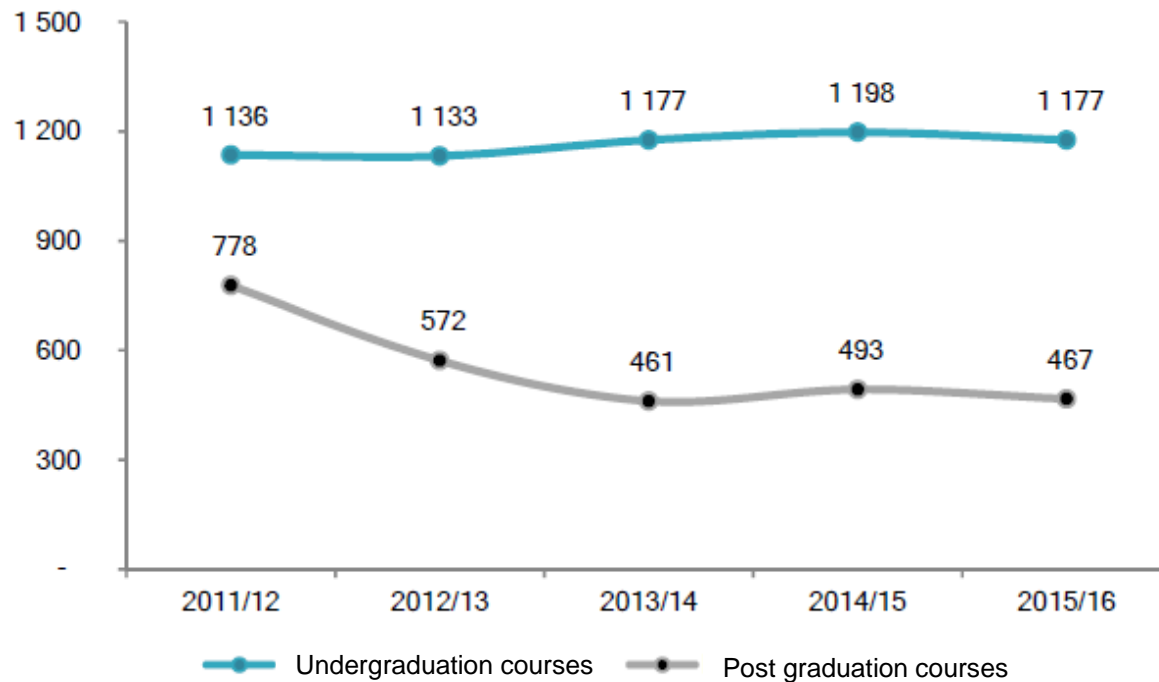


## Evolution of the number of places & candidates to the graduation course (2011- 2015)





## Evolution of the number of students in pre and post graduation courses (2011- 2016)





# ESCOLA SUPERIOR DE ENFERMAGEM DO PORTO

Students enrolled by course  
and school year (2011- 2016)

Specialization in Child Health and  
Paediatric Nursing



Master in Child Health and  
Paediatric Nursing



Isolated Disciplines



Curso	2011/12	2012/13	2013/14	2014/15	2015/16
CLE	1136	1133	1177	1196	1177
CPLEEC	28	11	10	20	20
CPLEEMC	35	19	22	17	20
CPLEER	50	20	20	18	21
CPLEESIP	43	13	18	18	24
CPLEESMO	31	36	46	31	38
CPLEESMP	32	16	14	18	15
MEC	41	29	20	16	25
MEMC	55	47	53	51	43
MER	61	46	52	49	58
MESIP	58	40	32	37	30
MESMO	62	57	47	35	35
MESMP	43	31	16	28	19
MSCE	25	23	22	20	21
MSIE	14	14	10	5	3
MDCSE	29	40	46	46	42
PGGSE					38
PGSCE	27			3	6
PGSIE	1		19	0	9
PGEA	172	110	20	18	
PME		31	47	57	16
UCI	28	68	52	49	52
TOTAL	1942	1773	1737	1732	1712

# 27th PNAE Meeting

**Paediatric Nursing Associations of Europe**

Escola Superior de Enfermagem do Porto, Porto, Portugal  
**Nursing School of Porto**

25th May 2016

Sandra Cruz  
[sandracruz@esenf.pt](mailto:sandracruz@esenf.pt)



## VISITING OUR COLLEGE...