



Royal College
of Nursing

The voice of nursing in the UK

Paediatric Nursing Associations of Europe 21st Meeting

Fiona Smith

Adviser in Children's & Young People's Nursing, Royal College
of Nursing, United Kingdom

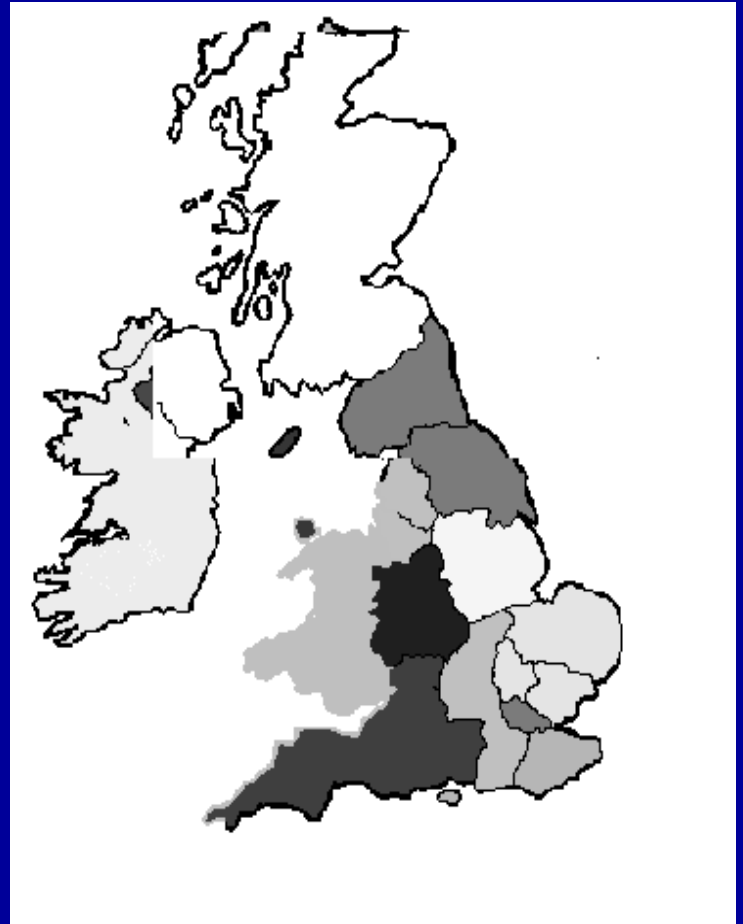
United Kingdom

Population (total)

62,975,000

4 countries:

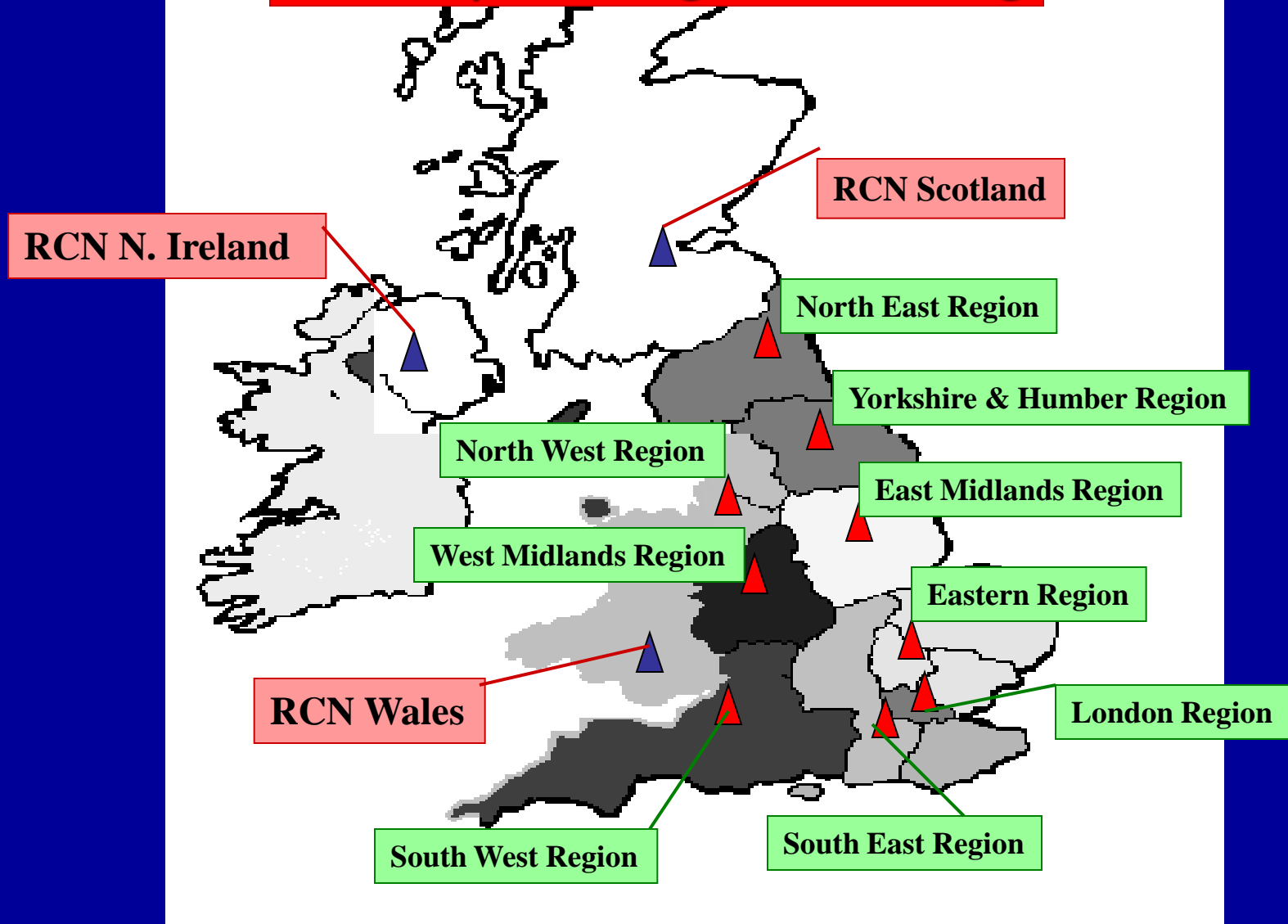
- **England (51,175,000)**
- **Scotland (5,100,000)**
- **Wales (3,000,000)**
- **Northern Ireland (1,700,000)**



Royal College of Nursing

- The RCN represents over 423,000 registered nurses, midwives, health visitors, nursing students, health care assistants and nurse cadets in the UK.
- The RCN is the largest professional union of nursing staff in the world.
- The College promotes patient and nursing interests on a wide range of issues by working closely with government, the UK parliaments and other national and European political institutions, trade unions, professional bodies and voluntary organisations.

The Royal College of Nursing



Paediatrics within the RCN

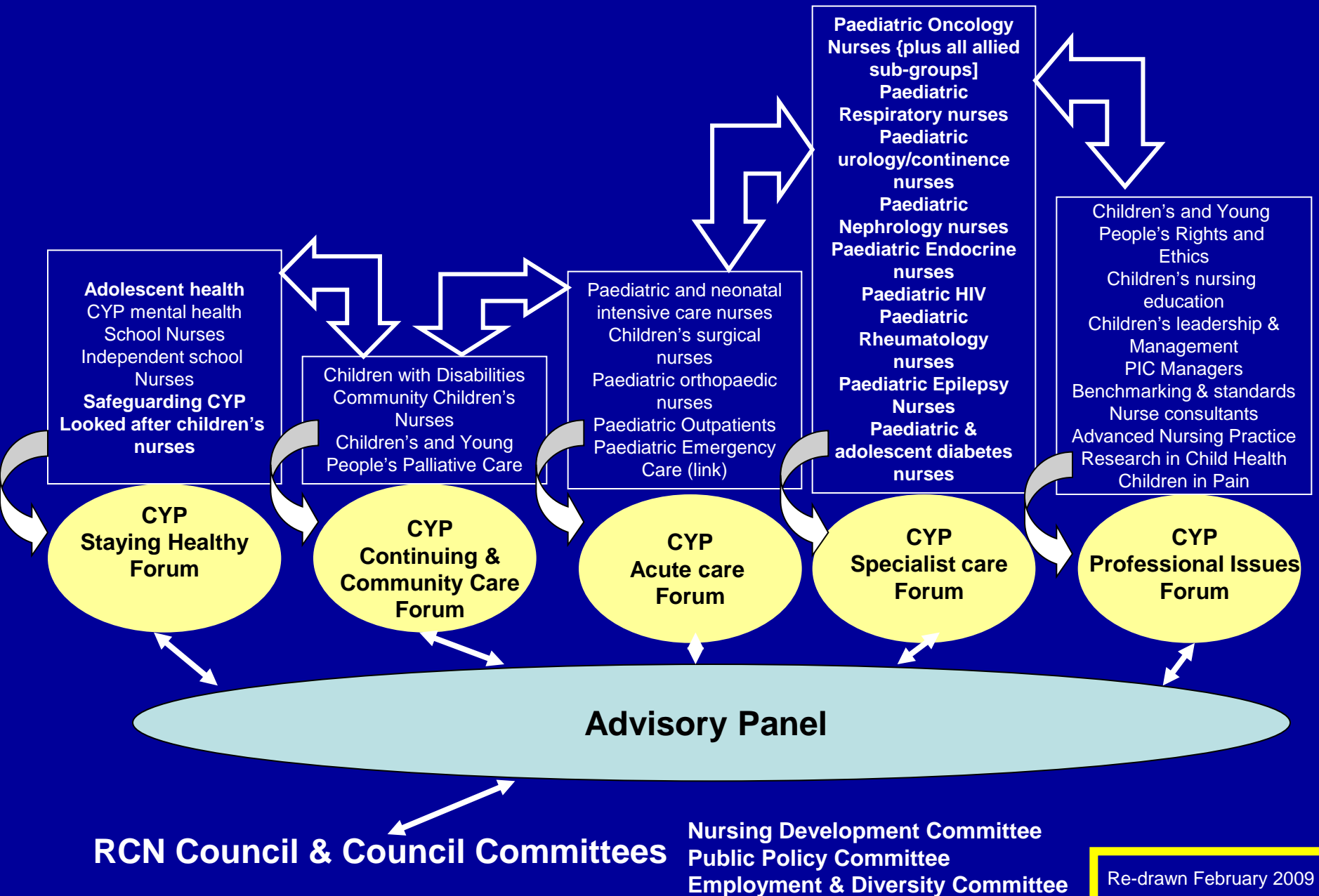
- **RCN established in 1916**
- **Membership opened to those with RSCN only qualification in 1960**
- **Appointed first Paediatric Nurse Advisor in 1984**

Paediatric Membership Groups

- **Society of Paediatric Nursing 1984**
- **Paediatric Oncology Nurses Forum 1984**
- **Paediatric Community Nurses Forum 1987**
- **Paediatric Nurse Managers Forum 1988**
- **Paediatric Intensive Care Nurses Forum 1988**
- **Children's & Young People's Mental Health Forum 1990**

Numerous Special Interest Groups!!!

RCN Children and Young People's Field of Practice



Nurses in the UK

Numbers on the nurses' part of the register

2006/2007

Adult	608,008
Mental health	100,050
Children	41,098
Learning disabilities	24,013
General	17,608
Fever	254
Total	791,031

Nurse Education: pre- registration

Degree level – core and field specific

Registered General Nurse

- **Adult Nursing**
- **Mental Health Nursing**
- **Children's Nursing**
- **Learning Disabilities Nursing**

Nurse Education

The Nursing and Midwifery Council validates programmes and sets standards for education of nurses, midwives and health visitors

This includes

- Essential Skills clusters
- Simulated learning

More information can be found at

<http://www.nmc-uk.org>

Nurse Education

Essential skills clusters cover:

- **Care, Compassion and Communication**
- **Organisational Aspects of Care**
- **Infection Prevention and Control**
- **Nutrition and Fluid Management**
- **Medicines Management**

Registration and regulation

The NMC sets the Professional code of conduct

The NMC maintains the nursing, midwifery and community public health practitioner register

Nurses etc are required to re-register every 3 years and pay an annual subscription:

- minimum of 450 hours of practice or return to practice in last 3 years
- undertake at least 35 hours of learning activity relevant to your
- practice during the three years prior to your renewal of registration
- maintain a personal professional profile of your learning activity



Thank you

Contact details:

Fiona Smith

**Royal College of Nursing
20 Cavendish Square
London**

W1G 0RN

Tel: + 44 (0)20 7647 3753