



Nurses and Midwives Association of Slovenia,
Association for nurses and health technicians in
pediatric nursing



PNAE
Paediatric Nursing Associations of Europe

Pediatric Nurses Associations of Europe 36th meeting Slovenia – October 2020

Majda Oštir, RN
majdao71@gmail.com



Nurses and Midwives Association of Slovenia,
Association for nurses and health technicians
in pediatric nursing



PNAE
Paediatric Nursing Associations of Europe

Pediatric nursing in Slovenia

Majda Oštir



Slovenia



PNAE

Paediatric Nursing Associations of Europe





Ljubljana



PNAE
Paediatric Nursing Associations of Europe





Nurses and Midwives Association of Slovenia



PNAE
Paediatric Nursing Associations of Europe

- In 2019, we celebrated the 100th anniversary of the nursing profession in Slovenia.
- Angela Boškin, the first trained nurse in Slovenia, who started working as a nurse in 1919, is one of the most important personalities for the development of nursing care and public healthcare in Slovenia.
- Section for pediatric nursing was established in 1978 and it is now 42 years old.



Nurses and Midwives Association of Slovenia



PNAE
Paediatric Nursing Associations of Europe

- Over 16,000 members – nurses, midwives, and health technicians
- The members are organized into 11 regional professional associations and work across 32 professional groups.
- The Association also supports several working groups.



Profession regulation



PNAE
Paediatric Nursing Associations of Europe

- The Nurses and Midwives Association of Slovenia is the national regulatory authority for the field of nursing and midwifery.
- Chamber maintain the national register of nurses, midwives, health care technicians, and caregivers and are responsible for granting, renewing and revoking licenses to nurses and midwives. According to the regulations in force, all nurses and midwives in Slovenia must be entered into the record and hold a valid license to practice independently, while health technicians and caregivers are entered into the record, but do not require a license to practice.



2019



PNAE
Paediatric Nursing Associations of Europe

- Implementation of the European directive on the recognition of professional qualifications for the profession of nurse



Our web page



PNAE
Paediatric Nursing Associations of Europe



ZBORNICA ZDRAVSTVENE IN BABIŠKE
NEGE SLOVENIJE - ZVEZA STROKOVNIH
DRUŠTEV MEDICINSKIH SESTER, BABIC
IN ZDRAVSTVENIH TEHNIKOV SLOVENIJE



AKTUALNO O
COVID-19



STANJE LICENČNIH
TOČK



REGISTER IN
LICENCE



PORTAL
ORGANIZATORJEV

O ZBORNICI - ZVEZI

IZOBRAŽEVANJA

ČLANSTVO

REGISTER IN LICENCE
javna pooblastila

REGIJSKA DRUŠTVA IN STROKOVNE SEKCIJE

SI EN

9. SEKCIJA MEDICINSKIH SESTER IN ZDRAVSTVENIH TEHNIKOV V PEDIATRIJI



Sekcija medicinskih sester in zdravstvenih tehnikov v pediatriji

Zdravstvena nega v pediatriji predstavlja izziv za zdravstvene delavce, saj združuje delo v zelo različnih obdobjih življenja človeka – od rojstva do obdobja prehoda v odraslo dobo. Skupna točka vseh obdobj sta otrok in družina v času zdravlja in času bolezni. Sekcija predstavlja povezavo med različnimi področji zdravstvene nege v pediatriji in z organizacijo strokovnih srečanj omogoča medicinskim sestram in zdravstvenim tehnikom, da svoja strokovna znanja obnavljajo in nadgrajujejo.

Ker menimo, da je v znanju tudi moč, želimo s sodelovanjem in povezovanjem stroke doseči kakovostno obravnavo otroka in družine na vseh nivojih zdravstvenega varstva. Področji, kjer želimo doseči napredek sta zdravstvena nega vmerjena v družino in nevarnostna obravnava otroka in družine.

www.zbornica-zveza.si



PNAE
Paediatric Nursing Associations of Europe

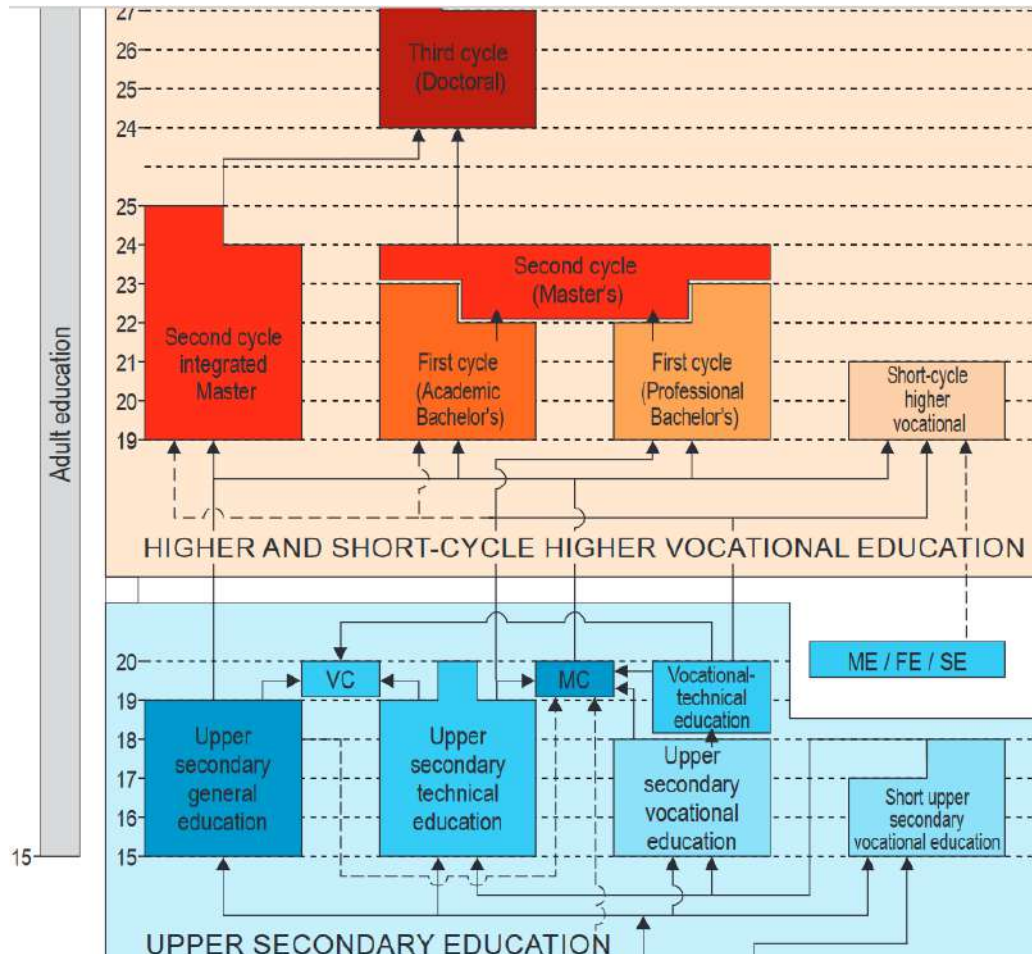
Current issues and challenges

- Specialization in pediatric nursing
- Staff normatives
- National protocols in pediatric nursing care

STRUCTURE OF THE EDUCATION SYSTEM IN THE REPUBLIC OF SLOVENIA



PNAE
Paediatric Nursing Associations of Europe



8 Nursing faculties

<https://www.gov.si/assets/ministrstva/MIZS/Dokumenti/ENIC-NARIC-center/solske-sheme/Structure-of-the-education-system-in-the-Republic-of-Slovenia-v2.pdf>



Hospitals in Slovenia and nursing care



PNAE
Paediatric Nursing Associations of Europe

University clinical centre

UNIVERZITETNI KLINIČNI CENTER

Univerzitetni klinični center Ljubljana

Univerzitetni klinični center Maribor

Pediatric clinic Ljubljana

Clinic for pediatrics
Maribor

General hospitals

Splošna bolnišnica Brežice

Splošna bolnišnica Celje

Splošna bolnišnica Izola

Splošna bolnišnica Jesenice

Splošna bolnišnica Murska Sobota

Splošna bolnišnica Novo Mesto

Splošna bolnišnica dr. Jožeta Potrča Ptuj

Splošna bolnišnica Slovenj Gradec

Splošna bolnišnica Dr. Franca Derganca, Šempeter pri Novi Gorici

Splošna bolnišnica Trbovlje

Departments for
pediatrics (from 10-60
beds)



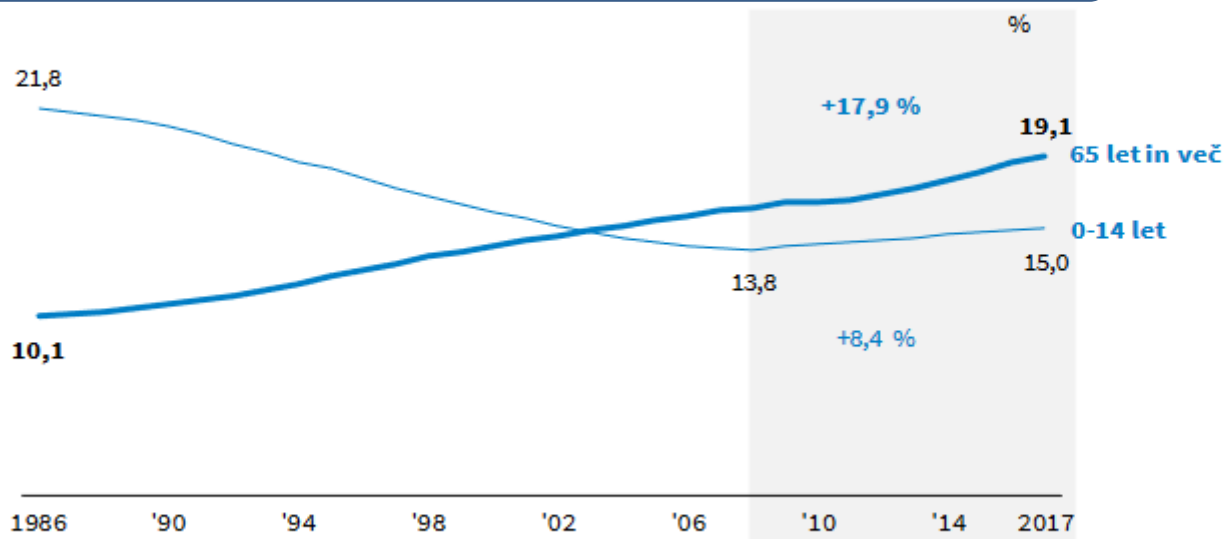
PNAE
Paediatric Nursing Associations of Europe

Population in Slovenija

ZDRAVSTVENI STATISTIČNI LETOPIS SLOVENIJE 2017

comparison of population by age

Slovenija, 1986–2017



Viri: SURS, <http://pxweb.stat.si/pxweb/dialog/statfile1.asp>, 25. 09. 2018

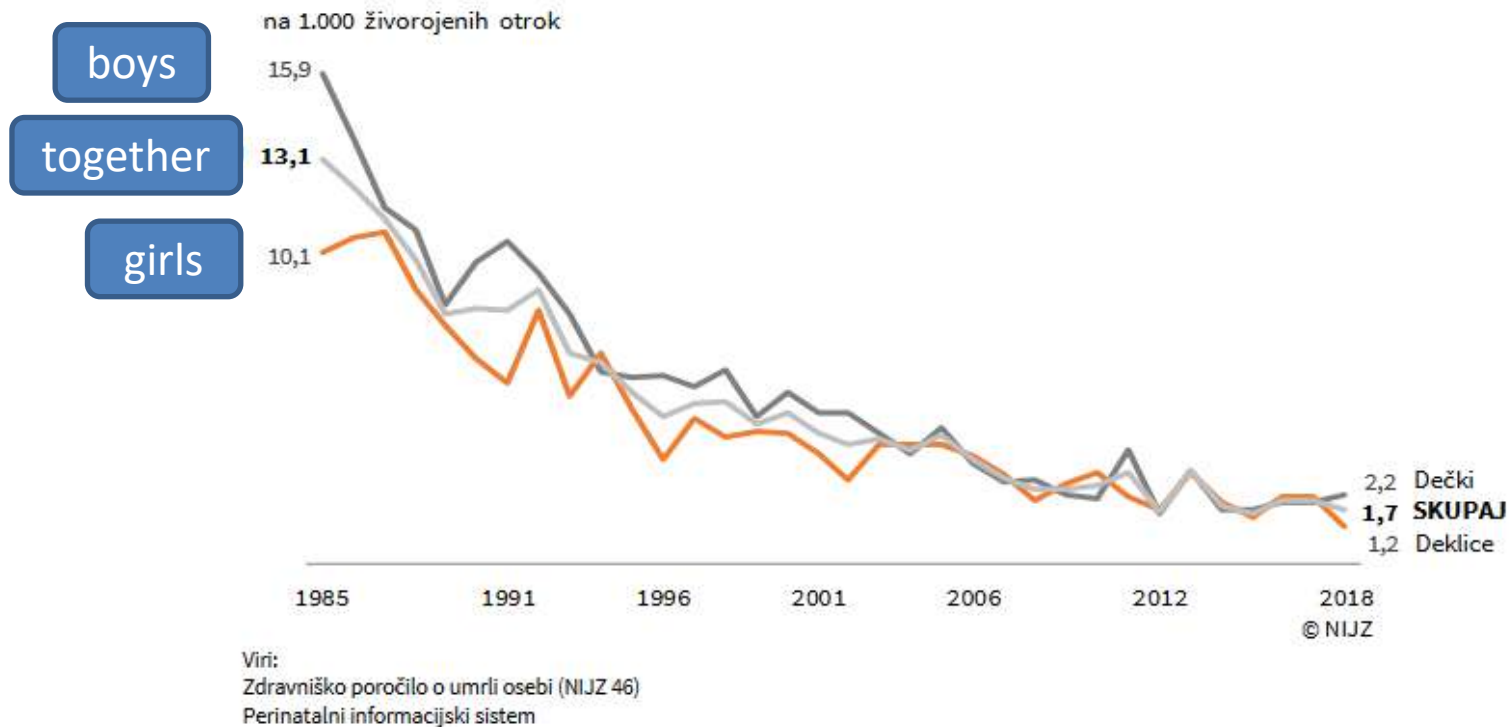
© NIJZ



PNAE
Paediatric Nursing Associations of Europe

Infant mortality

Infant mortality Slovenia, 1985-2018





Increase of preventive visits by community nurse



PNAE
Paediatric Nursing Associations of Europe

ZDRAVSTVENI STATISTIČNI LETOPIS SLOVENIJE 2017

5 ZDRAVSTVENI



preventive visits of community nurses in home

Varovanci po skupinah	Število	%	
Newborns	85.743	46,0	
Mothers	35.103	18,8	
Chronic diseases	26.479	14,2	
Infants	16.606	8,9	
Children 1-6y	4.954	2,7	
Starostniki ¹⁾	3.912	2,1	
Nosečnice	3.872	2,1	
Rakavi bolniki	3.382	1,8	
Diabetiki	2.005	1,1	
Invalidi	1.656	0,9	
Ostali varovanci	1.399	0,8	
Duševni bolniki	1.036	0,6	
Bolniki s kisikom	274	0,1	
TBC bolniki	16	0,0	
Šolarji	10	0,0	
SKUPAJ	186.447	100,0	

¹⁾ Zajem podatkov po spremenjenih ZZKS kriterijih.

Viri: Statistično poročilo o delu patронаžnega varstva, Obr. 8,95

© NIJZ



PNAE
Paediatric Nursing Associations of Europe

In last few years a lot of work in national level

KREPITEV ZDRAVJA
Za vse

About the Project Purpose and Objectives Health Promotion SLC

Primary healthcare
Primary healthcare centres provide healthcare services and prevention programmes to the local communities.
READ MORE

Integrated Health Promotion
Interventions in health promotion centre (IHPC) lead to healthy life habits.
READ MORE

Preventive Health Assessments
Together for the health of children and adolescents.
READ MORE

Community Nursing Service
A home visit from a registered nurse of the community nursing service.
anitas-refriva-eforn-thealth-promotion-infantatad-health-promotion-centre?

Vulnerable Groups
Provide high-quality healthcare for all.

Local Community for the Health of All
Local community connected for the



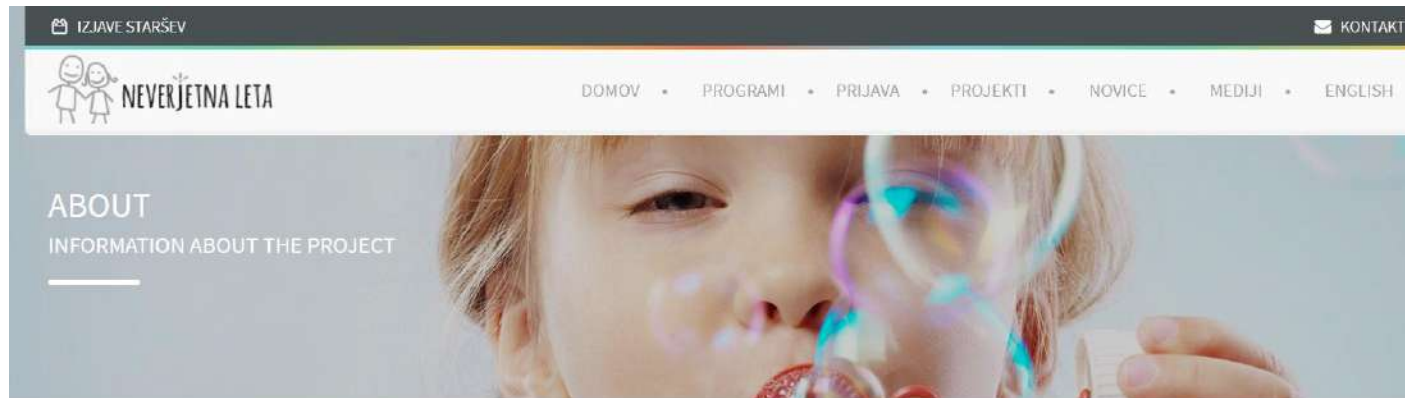
PNAE
Paediatric Nursing Associations of Europe

Preventive programmes

- The building of foundations of long-term health begins even before birth and continues in the earliest years of a person's life. Therefore, quality preventive care programmes and programmes for the promotion and protection of health of children and adolescents that are adapted to this population to the greatest extent possible are extremely important for promoting health and reducing health inequality. We updated the content and our methods of implementation in order to ensure that all children and adolescents and their parents have access to high-quality preventive healthcare services.
- **The following are provided to children in the 3rd and 6th grades of primary school:**
- an upgraded preventive health check-ups in which children are treated in a holistic manner,
- the early identification of children at risk of chronic diseases related to unsuitable dietary and physical activity habits, and
- appropriate action including informing and motivating children to actively take care of their health.



Incredible years – mental health for every child



INCREDIBLE YEARS - MENTAL HEALTH FOR EVERY CHILD

Behavioural disorders are the most common reason for referral of children to professional mental health services and in long-term they represent an increased financial burden on the individual and society. They can be prevented with programs aimed at parents of young children at a time when the family can still positively influence the child's behavior.

The purpose of the project is to introduce effective, evidence-based preventive program, which improves the sound growth of each child and wellbeing of the entire family. In many countries, including Norway, the implementation of this programs is already included in the national strategy and that will be one of our long-term objectives.

PLEASE CONTACT US FOR MORE INFORMATION

NAME:

E-MAIL:

MESSAGE:



REPUBLIKA SLOVENIJA
SLUŽBA VLADE REPUBLIKE SLOVENIJE ZA RAZVOJ
IN EVROPSKO KOHEZIJSKO POLITIKO

univerzitetni
klinični center ljubljana





Pediatric clinic



PNAE
Paediatric Nursing Associations of Europe

- 1865 child hospital
- 1874 Elizabet hospital
- City children hospital
- 1951 Pediatric clinic





PNAE
Paediatric Nursing Associations of Europe

Pediatric clinic Ljubljana – University medical centre Ljubljana 2009





PNAE
Paediatric Nursing Associations of Europe

Pediatric clinic Ljubljana

- 157 beds
- 5 beds day hospital hemato- oncology
- 6 child dialysis
- 12000 hospital admissions
- 6000 days of day hospital
- Average hospital stay 2,1 days
- 65000 outpatient care
- 70 000 funkcional diagnostic procedures



PNAE
Paediatric Nursing Associations of Europe

E-documentation

Think!Med

BIS 200086603 — STAROST 3l. 8M 9

Ocena stanja - Dihanje

Dihanje meritve

Dihanje ocena

Kašelj

Aspiracija

Sputum

Dihalna pot

Frekvenca dihanja: 36 št/min

Apnoa: sek Razlog

SaO2: 96 % Lokacija

tcpO2: kPa

tcpCO2: kPa

PEF pred: Izmerjen

Izmer: 100 l/min

PEF potem: Izmerjen

Izmer: 120 l/min

PEF razlika: 20

Potrdi

Think!Med

BIS 200086603 — STAROST 3l. 8M 9

Ocena stanja - Dihanje

Dihanje meritve

Dihanje ocena

Kašelj

Aspiracija

Sputum

Dihalna pot

Sputum / Aspirat

Ocenjevanje: Sputum Aspirat

Izgled: Normalen Bel

Količina: V sledovih Zmerno Obilo

30 ml

Vonj

Opombe

Potrdi

Prekliči

Think!Med

BIS 200086603 — STAROST 3l. 8M 9

Ocena stanja - Koža in sklepi

Kožne spremembe

Sidepi

Telo spredaj

Ocena stanja - Koža in sklepi

Kožne spremembe

Sidepi

Srce

Potrdi

Prekliči

Think!Med

BIS 200086603 — STAROST 3l. 8M 9

Ocena stanja - Koža

Spreddaj

Leva stran

Noga zgoraj

Aktualno

Vidne spremembe

Kožne spremembe

Stalneje znamenja

Rana

Urtikarija

Madeži bele kave

Purpura

Hemoragičen izpuščaj

Metuljasti izpuščaj

Sednost

Hematoma

Angioedem

1 - Blaga (do 3 urtika)

Srednje

Ena

Sufuzija

Milje

Petašije

Stare Nove

Utrice

Oč

Vrat

Asik

Litisa

Potrdi

Prekliči

Think!Med

Mastnak, Marina

BIS 200086603 — STAROST 3l. 8M 9

Ocena stanja - sklepi

Levo

Spreddaj

Rama

Gibljivost

Močno omejena

Toplota

Rdečina

Bolnina

Otekina

Datum

15.11.2011

Potrdi

Prekliči

Patient Hospital Zdravnik - Mozilla Firefox

http://kanja.marand.si/ispek/ISPEK_Prototype/Patient_Hospital_Zdravnik.html#OnLoadVariable=&Vloga=ZH&Pogled=&Ocena=&Hirearhija=&Nivo=&CSUM=1

Pediatrična klinika Ljubljana

Beri KZZ

Pacient Pacient

Recept

damenc

Frankovič, Anamarija

BIS 987654321 — ROJENA 23.02.2001 (8L 5M) Ž — NASLOV Brezje pri Grosuplju 123, 1290 Grosuplje (stalni) —
 SPR 23.02.2011 - 10.03.2011 — OPER 5D — SPREMLJEVALEC Marija Frankovič — ALERGIE Da

HOSP 09089876 — Gastroenterologija — N4C-10 / P2 — 06.08.2010 — P834: Nabrekle dojke novorojenčka (ginekostistija novorojenčka)

Patient T-List Dokumenti

Stanje pacienta

Skupno

Meritev

Pregled

Anamneza

Terapije

T-bilanca

Zapisi

Meritve

Preiskave

Posegi

Tuji

Nega

Vnos

Vitalni znaki

22:00 00:00 02:00 04:00 06:00 08:00

HR: 88 Beats/Min

Hemodinamika

22:00 00:00 02:00 04:00 06:00 08:00

Krvni pritisk

22:00 00:00 02:00 04:00 06:00 08:00

Tekočinska bilanca

	8/27	8/28	8/29*	Range total
Net (mL)	-202.05	47.71	136.7	-17.64

Continuous Infusion

Medication

Net

Urine Output

Terapije 13.6.2011 10:30 Vizita za danes še ni opravljena

Terapija Samo aktivne

2 prek 2 nap 2 zač 2 od 2 po potrebi

Tekočine in elektroliti

Heparin — DOZA 2500 i.e. / 50 ml — POT i.v. —
 RAZT 5% gluk a 1,9 ml/h; — FREKV glede na ACT 180

Sedacija in analgezija

Midazolam — DOZA 50 mg —
 RAZT 50 ml 5% gluk a 0,7 ml/h

Fentanyl — DOZA 2500 µg — RAZT 50 ml (čisti) a 0,4 ml/h

Norcuron — DOZA 0,3 mg — FREKV 2-4 h — POT i.v. pp

Analgin — DOZA 70 mg — FREKV 4-6 h — POT i.v. pp. —
 //ex

Vazoprocessori, inotropi, vazodilatatorji

Dopamin — DOZA 50 mg — FREKV 50 ml 5% gluk a 1 ml/h
 //ex

Protimikrobna zdravila

VI. Garamycin — DOZA 14 mg / 12 h — POT i.v.—
 RAZT 5ml 5 % gluk

VI. Gobemicina — DOZA 180 mg / 6 h — POT i.v. —
 RAZT 5 ml 5 % gluk

Druga zdravila

Ca Braun — DOZA 400 mg / 12 h — POT i.v.

Edemid — DOZA 3 mg / 24 h — POT i.v.

Acipap — DOZA 3,5 mg / 24 h — POT i.v.

Hydrocortison — DOZA 5 mg / 12 h — POT i.v.

Haemocomplettan (fibrinogen) — DOZA 100 mg —
 POT i.v.

Izvidi in naročila

Naročila Laboratorij F - TSH - TEODAE
 UZ kolkov

Odpust

17.10.2010 — Lipar — Nefrologija. Bol. Odd. — Začasen
 Hosp. od 8.9. do 10.9.2010
 Dgn.:
 Hypertensio arterialis esencialis
 Fundus hypertonicus gr. I. i.o.
 Asimetrija v velikosti ledvic
 Več ...

Izvid UZ

13.8.2010 — Anton Keing — NN Endokrinol. Bol. Odd. —
 Začasen

Napotna diagnoza: Mb Chron

UZ PREGLED ABDOMNA:
 Jetra so UZ homogene strukture.
 Žolčni vodi niso dilatirani. Žolčnik ima normalno steno.
 Žlakov za konkrementov ni.
 Več ...

Diagnoza

13.8.2010 — Lipar — NN Endokrinol. Bol. Odd. — Potrjen
 Napotna diagnoza: Mb Chron

Sprejem

12.10.2010 — Zmich — NN Nefrologija Bol. Odd. — Začasen
 10-letni Miha prihaja na naročen sprejem na nefro.
 oddelek zaradi 48-urnega Holterja. Vodi se na nefro.
 oddelku zaradi arterijske hipertenzije, fundusa
 hypertonicus gr. I. i.o., asimetrije v velikosti ledvic.
 Ni alergičen na zdravila in hrano. Cepljen redno.
 Otrošk ...

Več ...

Pregled UZ

13.8.2010 — dr. Marko Oblak — Naročilo

Diagnoza: Mb Chron

Klinično vprašanje:



PNAE
Paediatric Nursing Associations of Europe

Pediatric clinic

- The Division of Paediatrics, UMCL, is the central national institution committed to the diagnosis and treatment of children and young people from birth to age 18.

Služba za kardiologijo
Služba za pljučne bolezni, Center za cistično fibrozo
Služba za otroško psihiatrijo
Oddelek urgentne pediatrije
Klinični oddelek za gastroenterologijo, hepatologijo in nutricionistiko
Klinični oddelek za endokrinologijo, diabetes in presnovne bolezni
Klinični oddelek za nefrologijo
Center za otroško dializo
Klinični oddelek za hematologijo in onkologijo
Republiški center za hemofilijo
Center za presaditev krvotvornih matičnih celic pri otrocih
Klinični oddelek za neonatologijo
Klinični oddelek za otroško, mladostniško in razvojno nevrologijo
Center za epilepsijo
Klinični oddelek za imunologijo, alergologijo, revmatologijo



PNAE
Paediatric Nursing Associations of Europe

Current activities and challenges

- Atraumatic care
- Palliative care for children
- Improvement of selfmanagement programs for children and young people with chronic disease
- Professional development and nurses education



Nurses and Midwives Association of Slovenia,
Association for nurses and health technicians
in pediatric nursing



PNAE
Paediatric Nursing Associations of Europe

Thank you

